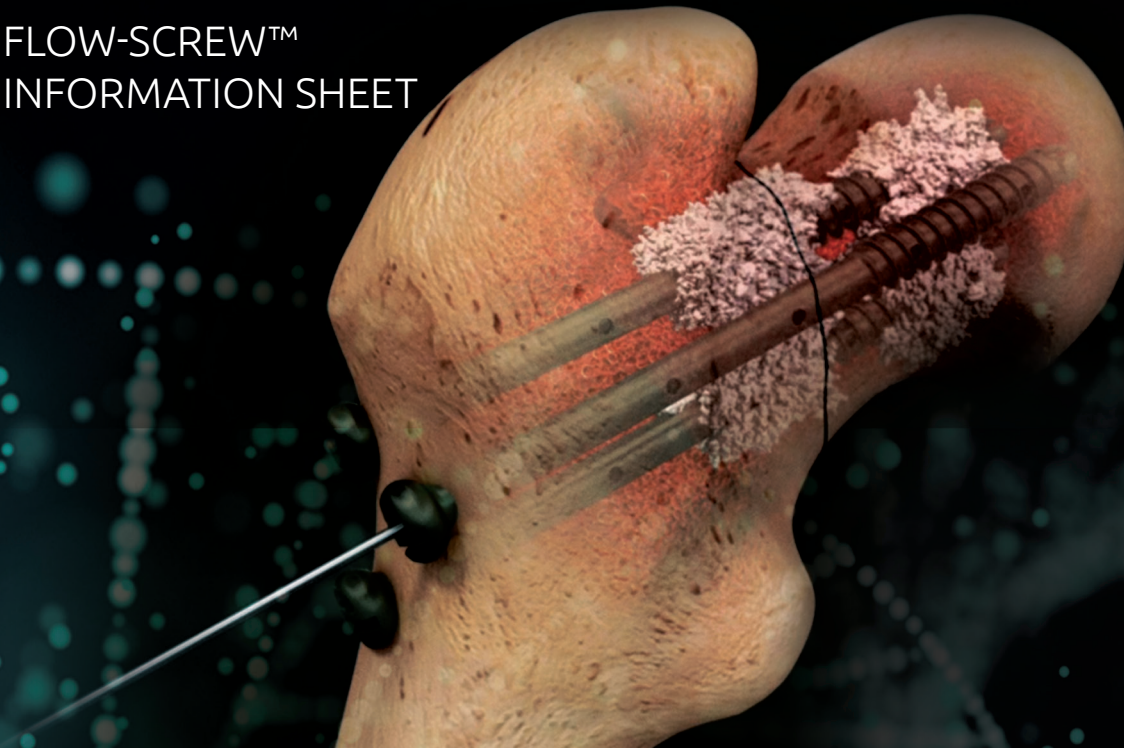




## FLOW-SCREW™ INFORMATION SHEET



### UNIQUE FRACTURE FIXATION VERSATILITY COUPLED WITH PRECISION DELIVERY OF BIOLOGICS

Patented, 510k-cleared Flow-Screw™ offers exclusive advantages:

- Patented side port cannula enables precise delivery of bone void filler throughout the body
- Cannulated, fenestrated screws are available in 7.3mm, 6.5mm, 5.5mm, 4.5mm and 3.5mm in partially and fully threaded versions
- Aggressive thread and wide range of lengths make them appropriate for use in most situations
- Flow-Screw™ can be used as a standalone fixation system and also alongside other systems for improved outcomes
- Patented intraosseous adapter attaches to any Flow-Screw™, Luer fitted syringe or tubing



Patented



*Addressing challenging osteoporotic and complex non-healing fractures  
by stabilizing the skeletal structure while delivering bone void filler.*

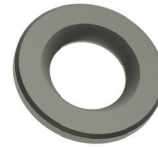
[www.Flow-FX.net](http://www.Flow-FX.net)



# REIMAGINING THE SCIENCE OF SKELETAL HEALTH

## Washer

13mm



## Partially Threaded – Short

### Diameter x Length

3.5mm x 10-60mm	2mm increments
4.5mm x 10-60mm	2mm increments
5.5mm x 30-120mm	5mm increments
6.5mm x 30-150mm	5mm increments
7.3mm x 30-150mm	5mm increments



## Partially Threaded – Long

### Diameter x Length

5.5mm x 30-120mm	5mm increments
6.5mm x 45-150mm	5mm increments
7.3mm x 45-150mm	5mm increments



## Fully Threaded

### Diameter x Length

3.5mm x 10-60mm	2mm increments
4.5mm x 10-60mm	2mm increments
5.5mm x 20-120mm	5mm increments
6.5mm x 20-60mm	5mm increments
7.3mm x 20-150mm	5mm increments



Find out how Flow-FX™ products can help improve patient outcomes and lower costs in your practice. Visit [Flow-FX.net](http://Flow-FX.net) to learn more.

[www.Flow-FX.net](http://www.Flow-FX.net)